

# Bradfield City Centre

Australia's Newest City for Innovation  
and Advanced Manufacturing

**An Invitation to Partner**

September 2022

[wpc.a.sydne.y](http://wpc.a.sydne.y)



Artist's impression



# Acknowledgement of Country

The Western Parkland City Authority acknowledges more than 60,000 years of continuous Aboriginal connection to the land that makes up New South Wales.

Since time immemorial, Aboriginal people have managed, cultivated and cared for the landscape where Greater Sydney was established and continues to grow. Aboriginal people hold profound knowledge, understanding, obligation and custodianship of the landscape.

The Western Parkland City Authority acknowledges the traditional owners of the lands that include the Western Parkland City and the living culture of the traditional custodians of these lands.



Smoking ceremony on site

# Contents

Welcome to Bradfield City Centre	4
Western Parkland City Authority Chair Jennifer Westacott	6
The Opportunity: The Bradfield City Centre	8
How to get involved	10
How can we assist you?	11
Innovate: The Advanced Manufacturing Research Facility	12
Invest: Join an advanced ecosystem of world-class companies	14
Learn: New Education and Training Model	15
New South Wales and the Western Parkland City	16
The Western Parkland City Authority	18



# Welcome to Bradfield City Centre

The NSW Government has committed over \$1 billion to kickstart development of the Bradfield City Centre as Australia's newest city centre for the 22nd Century.

Bradfield City Centre will be located within the Western Sydney Aerotropolis. It will be built on Government land near Badgerys Creek Road, Bringelly, on the doorstep of the of the new Western Sydney International (Nancy-Bird Walton) Airport.





The Bradfield City Centre will be a cyber-secure, advanced, green and connected hub for advanced industries.

The NSW Government investment of over \$1 billion to activate the Bradfield City Centre for private sector-led development includes:

- Around 36 hectares of public domain - including parks, plazas and water features
- 60 hectares of land prepared for development - including earthworks, roads, and utilities
- The National Security Quarter - a new hub for the advanced defence and innovation sectors
- Advanced Manufacturing skills - a pilot training program to provide a skilled, engaged workforce ready for the needs of modern manufacturing environments
- Visitor centre and high-tech research facility - with shared space and equipment for international advanced industry firms and local manufacturers
- Digitally-enabled city centre and public domain - including high capacity conduit, common access ducts, and smart infrastructure
- Commercial and community facilities - including retail, cultural, childcare and car parking
- A new metro station with an integrated plaza just minutes from the international airport
- Dining, entertainment and leisure - around public waterways



# Western Parkland City Authority Chair Jennifer Westacott



I am honoured to chair the Western Parkland City Authority, which is tasked with co-ordinating the growth of the Western Parkland City. Government investment will transform the Western Parkland City into a modern centre of advanced industries for Australia and the world.

Driving this transformation will be Bradfield City Centre, a home to advanced industries such as defence and commercial aerospace, automated warehousing and supply chains, autonomous vehicles, modular building systems, battery storage and recycling. The city will also be home to the CSIRO, Australia's peak science organisation, and a new multi-university.

This is enabled by a 24/7 curfew free international airport and a new metro line linking travellers, residents and communities with Bradfield, the Western Parkland City and the world.

Development at Bradfield will be accelerated by NSW Government investment in:

- over \$1 billion to activate it as Australia's first cyber-secure, clean energy hydrogen-ready, autonomous smart city

- a first building housing a high-tech industrial research facility for industry and research institutions to prototype and commercialise new technologies
- a New Education and Training Model (NETM) with bespoke TAFE and university training programs to deliver the skills needed for modern manufacturing.

These initiatives will be a magnet for companies looking to locate their operations for Asian growth markets. Already some of the world's biggest companies will be partners.

There will be no better place for industry to locate. No better time for investors seeking world-scale investment opportunities. No better moment for industry to partner with each other, universities and the CSIRO to scale up new advanced technologies.

We are looking to partner with you. No advanced industry can afford to miss this growth opportunity.

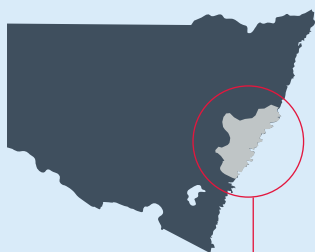
**Dr Jennifer Westacott AO**  
Chair

A handwritten signature in black ink, appearing to read 'J. Westacott'.

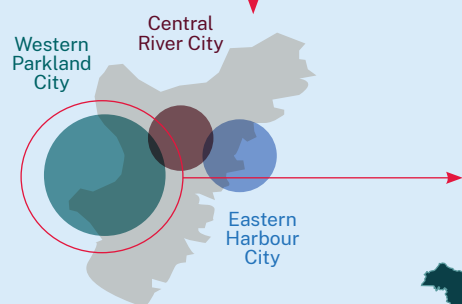
Australia



New South Wales



Greater Sydney



## Western Parkland City





# The Opportunity: The Bradfield City Centre

The Bradfield City Centre will be Australia's first 22nd Century City. A globally competitive centre for advanced manufacturing that will become the best place in the Indo-Pacific for industry to research, develop and commercialise innovative products and processes.

Adjoining the Western Sydney International Airport, the Bradfield City Centre will provide the infrastructure, connectivity and workforce skilling programs to support advanced industry.

The NSW Government has committed over \$1 billion to begin delivery of the Bradfield City Centre, with construction set to commence in 2022 and the first building delivered in 2023.

The city is uniquely positioned to leverage the State and Commonwealth Government's joint commitment to lift Australia's sovereign industrial capability in emerging and advanced industries.

With support from government at all levels, we are delivering a city for the future with an adaptable built environment; a focus on technology and innovation; and world-leading research, skills and education programs.

It will be a bespoke city, built with and for industry using infrastructure and urban design principles that will maximise its potential as a centre for advanced and emerging industries.





An innovation ecosystem with a concentration of world-class companies spanning the defence and aerospace, advanced manufacturing and research and development sectors.



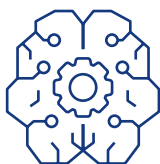
A place connected locally and globally through the Western Sydney International Airport, world-class public transport and cutting edge digital infrastructure.



Endowed with leading R&D and workforce skilling programs.



Supported by sustainable utilities, advanced digital networks and cyber security measures to support the needs of advanced industry and supply chains.



A city in a parkland offering people access to green, open spaces for recreation and wellbeing. Complemented by a mix of vibrant cultural centres, cafés, restaurants and entertainment.



Through sustained partnership between the NSW Government and industry, the Bradfield City Centre will grow into a vibrant economic powerhouse, generating high skilled, high productivity jobs.

We invite you to partner with us on tenancy opportunities as the Bradfield City Centre takes shape.

## Industries aligned to Bradfield City Centre and Aerotropolis

The NSW Government is investing in critical capabilities that align well with a wide range of industries, including:



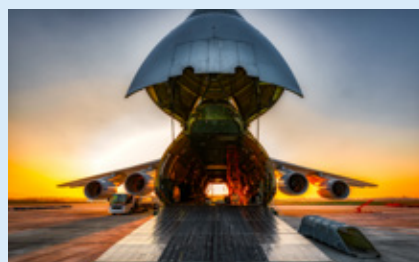
**Advanced Manufacturing**



**Aerospace and Defence**



**Freight and Logistics**



**Agribusiness**



**Pharmaceuticals**

# How can we assist you?

The Western Parkland City Investor Concierge Service is a free, comprehensive and confidential service which can provide your business with a suite of support services including information, site selection and employee training.

Briefings on the growth and opportunities across the region



Identification of suitable available office and industrial space



Assistance with business requirements including economic analysis and skills data



Coordination across key government agencies and regulatory bodies



Introductions to local partners for supply chain identification and research collaborations



Access to world-class workforce skills development and training



Advice on accessing grants and other financial incentives



Assistance with familiarisation visits to the Western Parkland City and Bradfield City Centre



To find out more about our service offering and how we can support you to establish or expand your business in the Western Parkland City contact our Head of Concierge at [invest@wpca.sydney](mailto:invest@wpca.sydney).



# How to get involved

In the Western Parkland City, we are offering an investment attraction package geared toward advanced industry and backed by record government investment in the infrastructure, facilities, services and skills needed to support advanced and emerging industries.

We invite you to be a part of this once in a generation opportunity. There are several ways to partner in the delivery of the Western Parkland City and Bradfield City Centre.

Visit [wpca.sydney](http://wpca.sydney) to learn more about doing business in this part of NSW and to register your interest via a confidential online form.



## Innovate

We invite industry, education and research partners to test, prototype and rapidly scale products and techniques, leverage high-tech equipment and take up tenancies in the Advanced Manufacturing Research Facility (AMRF).



## Invest

We invite industry with the right expertise, ambition and drive to invest in the Western Parkland City.



## Learn

We invite industry partners to talk to us about how the New Education and Training Model (NETM) can help address current and emerging skilling needs.

# Innovate: The Advanced Manufacturing Research Facility

Located in the Bradfield City Centre, the Advanced Manufacturing Research Facility (AMRF) will be a shared platform for collaboration and innovation.

The NSW Government is trialling the concept of the AMRF by investing in a high-tech industrial research facility that will be located in a first building at the Bradfield City Centre by late 2023. This will support the growth of future facing industries in areas such as defence, space and aerospace; construction technologies; mining technology; logistics technology; new energies; and the circular economy.

The AMRF will be a catalytic investment in industrial infrastructure that will provide business with access to unprecedented research and development.

Bridging the interface between government, industry and research institutions, the AMRF will house robots, machines, facilities and services that businesses can access to test, prototype and rapidly scale advanced manufacturing products and techniques.



Artist's impression, indicative only





The industrial research equipment will be housed in state-of-the-art facilities and possess core capabilities in digital, composites and additive manufacturing, simulation and advanced assembly. It will house:

- Leading edge test laboratories and equipment
- High-tech, industry relevant manufacturing equipment
- Reconfigurable research and manufacturing spaces
- Rapid prototyping facilities– including 3D printing and additive manufacturing
- Virtual and augmented reality equipment.

Australia's National Science Agency, CSIRO, will also move their headquarters to the Bradfield City Centre –complementing NSW Government's vision of an advanced city and STEM ecosystem. CSIRO's new facility will feature state-of-the-art laboratories and workshops for hundreds of its skilled researchers, scientists and workers, helping to create a world-leading innovation precinct.

## Roles of the AMRF

### Advise

Provide policy guidance and co-ordination of advanced manufacturing providers nationwide.



### Establish

Help establish advanced manufacturing processes to move new technologies through the manufacturing service levels and address production challenges.



### Incubate

Enable prototyping of high-tech, short run production using specialised equipment until it reaches a commercial scale.



### Qualify

Making it easier for companies to establish local operations that operate at the standard required by international standards.



### Connect

Bring together industry, universities, financiers and government to create the ecosystem needed to support a globally competitive advanced manufacturing industry.



To explore potential for a tenancy within the AMRF visit:  
[wpca.sydney/investment-attraction/contact-us](http://wpca.sydney/investment-attraction/contact-us)



# Invest: Join an advanced ecosystem of world-class companies

Bradfield City Centre is attracting significant interest from local and global companies.

“

Bradfield City Centre is a next-generation project for Sydney, NSW and Australia and is absolutely in line with GE's long-standing focus on collaboration to drive innovation. We are delighted to be working with the NSW Government on such a landmark project, that is set to play a significant role in supporting productivity, economic growth, investment and jobs for many Australians.

**Samuel Maresh**  
*Country Leader*  
*GE Australia*

“

Bradfield is underpinned by an exciting and transformational vision that aligns with Hitachi's vision and its strategy for investment, growth and innovation in Western Sydney. Bradfield provides an ideal operating location for technology enabled business like ours to do business within Australia and beyond.

**Michael Miller**  
*Managing Director*  
*Hitachi Australia Pty Ltd*

“

Major Commonwealth and NSW Government skills and infrastructure investments at the Aerotropolis Core and across the Western Parkland City, under a 'city deal' framework are creating opportunities for at-scale and impactful industry and research collaboration. This investment and policy backdrop has been pivotal in enabling the rapid roll-out, with industry and community partners, of agile re-skilling programs such as the 'Multiversity' program, developed by the four NUW Alliance universities and TAFE NSW.

**Dr Andy Marks**  
*Chief Executive Officer*  
*NUW Alliance*

“

The NSW Government's commitment to actively working with industry on research collaboration and training through its investment at Bradfield is a game changer for local firms across Western Sydney – Vitex is excited to be a part of the Bradfield vision.

**Dr. Aniss G. E. Chami**  
*Chief Executive Officer*  
*Vitex Pharmaceuticals Pty Ltd*



# Learn: New Education and Training Model

The Western Parkland City Authority is developing a ground-breaking New Education and Training Model (NETM) in collaboration with industry, universities, Vocational Education and Training (VET) providers and government.

With a focus on flexible, on-the-job learning and blended qualifications, the NETM will play a key role in enabling industry growth and supporting businesses to meet their workforce training needs in advanced and emerging industries.

Through the NETM, industry will benefit from NSW Government support to partner with tertiary institutions –providing businesses with access to world-class and cost effective skills development specifically tailored to industry requirements.

This will ensure that, as we attract new industry and create skilled new jobs in the Western Parkland City, our current and future citizens have the skills and training they need to take them up.

The NSW Government has committed \$37.4 million to co-develop and co-deliver 100 micro-credentials through the NETM, creating more than 7000 training opportunities commencing from 2022-2025.

We invite industry partners to talk to us about how the NETM can help address current and emerging skilling needs.

Contact us via our website  
[wpca.sydney/netm](http://wpca.sydney/netm)





---

# New South Wales and the Western Parkland City

At more than half-a-trillion dollars, NSW is Australia's largest state economy. NSW accounts for around a third of the nation's economic output and is home to nearly a third of all Australians. NSW has a strong and diversified economy, a robust growth profile and an excellent credit rating.





Nepean River in the Western Parkland City

NSW has a strong industrial base, with cutting edge industries and world-leading universities. NSW is experiencing Australia's largest infrastructure boom and is home to a highly skilled, innovative and creative workforce.

The Western Parkland City is one of Australia's fastest-growing regions. Over 1.4 million people are expected to call the Western Parkland City home by 2036.

Small businesses and skilled industry sectors are generating more than \$56 billion per year GRP and employing more than 420,000 people across the Western Parkland City.

The Western Parkland City comprises eight local government areas: Blue Mountains, Camden, Campbelltown, Fairfield, Hawkesbury, Liverpool, Penrith and Wollondilly. These areas boast incredible cultural diversity, strong Indigenous heritage and amazing natural assets.

Framed by world heritage areas, national parks and beautiful waterways, the Western Parkland City offers quality lifestyle choices from urban to rural residential. Close to Sydney CBD, the Western Parkland City offers a healthy, active lifestyle and a vibrant culture that leverages its diversity and dynamic demographics.

The Western Parkland City has a bright future, catalysed by the Western Sydney International Airport and underpinned by Government investment of more than \$20 billion to deliver the most advanced, green and connected city in the Indo-Pacific.

# The Western Parkland City Authority

The New South Wales Government established the Western Parkland City Authority to partner with industry in the design, delivery and growth of the Western Parkland City.

Working alongside Investment NSW, the Western Parkland City Authority is responsible for delivering, coordinating and attracting investment to the Western Parkland City.

We are focused on realising the enormous opportunity presented by the Western Sydney International (Nancy-Bird Walton) Airport and the \$20 billion-plus City Deal – a trilateral government investment already earmarked for the City.

We do this by taking a holistic and collaborative approach to achieve the best possible outcomes in infrastructure, liveability, investment, job growth and sustainability for business and communities of the Western Parkland City.

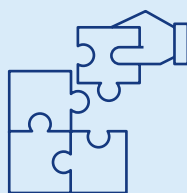
The Authority works closely with the eight Western Parkland City councils (Blue Mountains, Camden, Campbelltown, Fairfield, Hawkesbury, Liverpool, Penrith and Wollondilly), multiple state and Commonwealth departments, business, higher education institutions, landholders and the community to bring the vision of the Western Parkland City to life.

We are actively partnering with industry and business to deliver a new global city that will be the best place in the Indo-Pacific for advanced and emerging industries.



## Investment

We are attracting local, national and international investment to the Bradfield City Centre and developing the future workforce through new education, skills and training models.



## Coordination

We will ensure the city is planned and coordinated to meet the needs of the residents, workers and industry now and into the future.



## Delivery

We will deliver the key features of the Western Parkland City including the Bradfield City Centre.



# Partners of Bradfield City Centre

NSW Government & Commonwealth Partners



Western Sydney Airport



Australian Government  
Department of Infrastructure, Transport, Cities and Regional Development



Greater Cities Commission



Department of Planning and Environment



Transport for NSW



sydney METRO



inSW Infrastructure  
New South Wales

Local Government Partners



blue mountain City Council



camden council



Hornsby City Council



Wollondilly Shire Council



Fairfield City  
Celebrating diversity



LIVERPOOL CITY COUNCIL



PENRITH CITY COUNCIL



CAMPBELLTOWN CITY COUNCIL

Industry Partners



NORTHROP GRUMMAN



WESTERN SYDNEY UNIVERSITY



THE UNIVERSITY OF NEWCASTLE AUSTRALIA



UNSW SYDNEY



UNIVERSITY OF WOLLONGONG AUSTRALIA



MITSUBISHI HEAVY INDUSTRIES



SMBC SUMITOMO MITSUI BANKING CORPORATION



SYDNEY MARKETS



HITACHI



vitex pharmaceuticals



UR



THE UNIVERSITY OF SYDNEY



CSIRO

+ 18 Space SMEs



Australian Space Agency



SAMSUNG SDS



suez



Sydney WATER



BAE SYSTEMS



AMRC  
ADVANCED MANUFACTURING RESEARCH CENTRE



GE Additive



DB SCHENKER



SIEMENS



Quickstep



ROMAR  
Scalable Manufacturing Solutions



FedEx



ABB



SIMS METAL



UTS  
UNIVERSITY OF TECHNOLOGY SYDNEY



NEC



NEPEAN  
Engineering & Innovation



DAIKIN



DMTC



PRECISION  
Metal Group



DASSAULT SYSTEMES



colesgroup



BLUGLASS



DRONESHIELD

For more information, visit:  
[wpca.sydney/investment-attraction/contact-us](http://wpca.sydney/investment-attraction/contact-us)

Bradfield City Centre – An Invitation to Partner

19

Western Parkland City Authority

Visit: [wpca.sydney/investment-attraction/contact-us](http://wpca.sydney/investment-attraction/contact-us)

