



Artist's impression

# Advanced Manufacturing Research Facility

**Western Parkland City Authority**

**T:** 1800 312 999 **E:** [amrf@wpca.sydney](mailto:amrf@wpca.sydney) **W:** [wpca.sydney/amrf](http://wpca.sydney/amrf)

July 2023



# Advanced Manufacturing Research Facility

The Western Parkland City is one of the largest manufacturing centres in Australia and home to more than a third of Sydney's skilled manufacturing workforce.

A state-of-the-art facility in Bradfield City Centre, at the heart of the Western Sydney Aerotropolis' growing innovation hub, the Advanced Manufacturing Research Facility (AMRF) will enable the manufacturing industry to drive productivity improvements, utilise innovative technology, and propel the development of research and prototypes into commercial products.

The AMRF will support the NSW manufacturing industry by recognising and building on its strengths, bringing new capabilities and markets into reach, and supporting the growth of new high-value jobs.

[www.wpca.sydney/amrf](http://www.wpca.sydney/amrf)

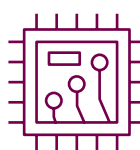
## Quick facts



The first industry focused advanced manufacturing development centre in Australia



AMRF Stage 1 opening 2024



AMRF Stage 2 opening in 2026



Over \$300 million investment



Specialised technology in automation, metal additive manufacturing, precision multi-axis machining, composite manufacturing, digitisation, and metrology



Connecting NSW manufacturers with global opportunities



**Subscribe and stay up to date**

Scan the QR code to visit our subscription page to receive information, news and updates  
[www.wpca.sydney/news/subscribe-newsletters](http://www.wpca.sydney/news/subscribe-newsletters)

